



GAT MONTHLY MEMBERSHIP PROGRESS REPORT

Results as of: 2/28/2023

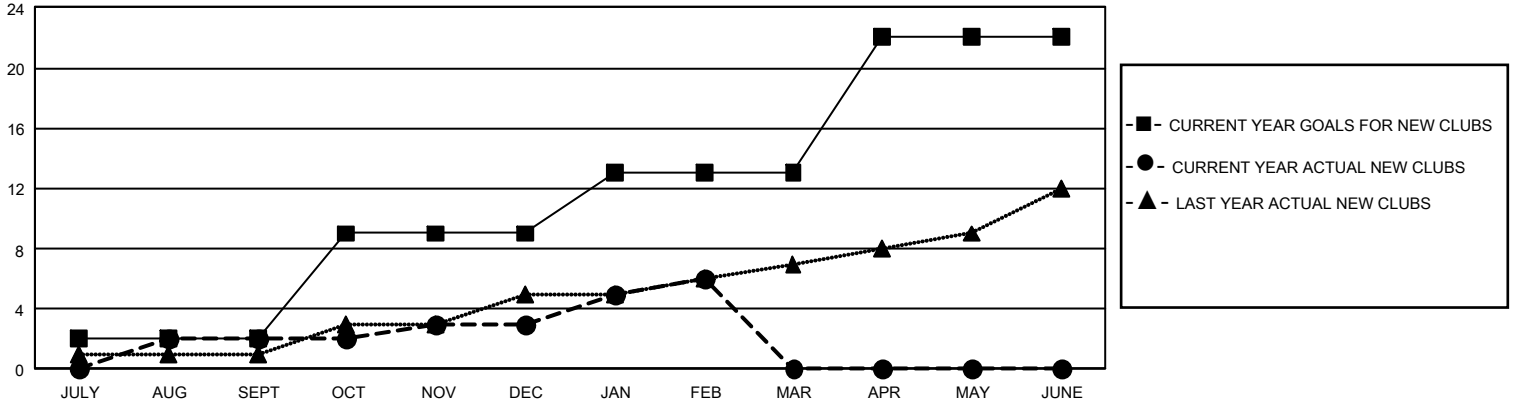
GMT Constitutional Area 1, Group F

REPORT DOES NOT INCLUDE CLUBS IN UNDISTRICTED AREAS.

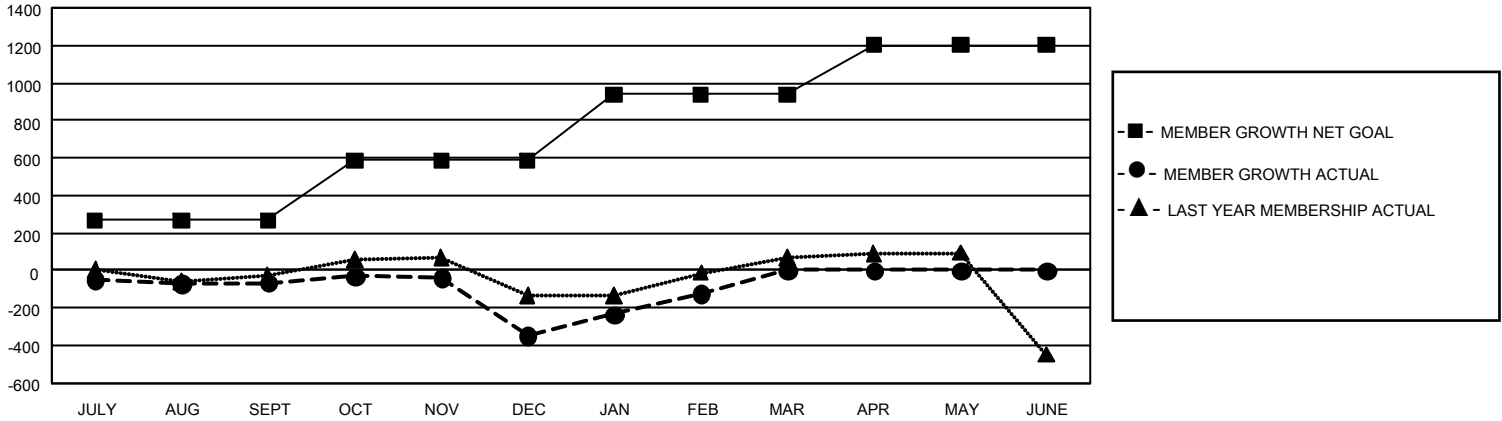
Clubs			
RESULTS FOR 2022-2023			
QUARTER	NEW CLUB GOAL	NEW CLUBS	DROPPED CLUBS
JULY/AUG/SEPT	6	2	5
OCT/NOV/DEC	21	1	14
JAN/FEB/MAR	12	3	0
APR/MAY/JUNE	27	0	0

Members			
RESULTS FOR 2022-2023			
QUARTER	MEMBER GROWTH NET GOAL	MEMBER GROWTH ACTUAL	DROPPED MEMBERS ACTUAL (including transfers)
JULY/AUG/SEPT	268	553	558
OCT/NOV/DEC	318	593	834
JAN/FEB/MAR	353	627	370
APR/MAY/JUNE	262	0	0

GOALS AND ACTUAL NEW CLUBS CUMULATIVE



GOALS AND ACTUAL MEMBERS CUMULATIVE



DROPPED CLUBS: 19 DROPPED MEMBERS DECEASED 220 CLUB CANCELLED 157 OTHER 1,385 TOTAL 1,762	409 CLUBS OF 860 ADDED 1 OR MORE NEW MEMBERS	GENDER DISTRIBUTION MALE 13,920 (60.52%) FEMALE 9,052 (39.35%) NON BINARY 0 (0.00%) PREFER NOT TO ANSWER 29 (0.13%)
	CLICK HERE FOR CUMULATIVE MEMBERSHIP DATA	TOTAL FAMILY UNIT MEMBERS 4,219 FAMILY MEMBERS PAYING HALF DUES 2,201